



**MAHIMA GROUP**  
Committed to Excellence



2&3 BHK Apartments

Opp. Radha Soami Satsang Beas, Main Tonk Road, Jaipur

RERA Registration No. RAJ/P/2017/202



## Benefits of **buying a home from Mahima**



**31** years of excellence  
in real estate industry



Committed to  
on-time delivery



Choose from  
wide range of apartments



Options to choose your home loan provider  
as per your requirement



Professional in-house facility management company  
with dedicated customer care helpline number for hassle-free living



Safe & secure environment  
in all the projects



Free interior designing  
consultation

### **FINETECH** in house maintenance & facility management company

Mahima Group believes and works to achieve the single line philosophy that says “nothing stands stronger for a lifetime than trust”. Team Mahima relentlessly works to deliver complete peace of mind to its valued customers even after the sale is completed. To take care of the property and ensure security of residents, Finetech Facilities Management works round-the-clock under the able supervision of Mr. Nikhil Madan. It is about delivering 360 degree facility and management services to the residents of all Mahima projects. Core work areas of the company include common services, sanitation, cleanliness and security.



The **Makers**



**MAHIMA GROUP**  
Committed to Excellence

Mahima Group is the pioneer of real estate in Rajasthan with **31 years of strong presence** across various verticals of infrastructure development. The group boasts a highly motivated team of more than **300+ professionals working** in various capacities to realise the larger vision in its true sense. In its existence of more than 3 decades, Mahima Group has successfully delivered **4650 residential and commercial units that cover 8 million sq. ft. of development**. In commercial development **4 large commercial malls** were delivered that houses more than **100+ renowned national and international brands**. The extended Mahima family includes **3750+ happy families** that are residing in various projects of the group. Currently Mahima Group is developing 2.60 million sq. ft. of space that includes **1640 units across 7 ongoing projects**. The group also runs **360 degree facility and project cycle management** services that maintain its various completed projects in a very efficient and professional way. With a passion to bring about a meaningful change in the lifestyle of contemporary society, Mahima is on a mission called **“Constructing Your World”**.





## Project Location



 MAHIMA'S  
**sansaar**

### KEY DISTANCES:

Sarla Bihari Temple - **2 Mins**

Chokhi Dhani - **4 Mins**

Educational Institutes - **5-7 Mins**

Hotel Crown Plaza - **7 Mins**

Bombay Hospital - **10 Mins**

Narayana Hrudayalaya Hospital - **10 Mins**

Mahatma Gandhi Hospital - **10 Mins**

Hotel Marriott - **15 Mins**

Entertainment Paradise - **15 Mins**

World Trade Park - **20 Mins**

Jaipur International Airport - **20 Mins**

Durgapura Railway Station - **20 Mins**








## Project Overview

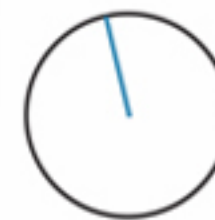


Mahima Sansaar is a project of its kind that is situated across sprawling **7.75 acres**. Termed as **Rajasthan's first sports lifestyle project**, Sansaar Phase-I offers options of **2 and 3 BHK apartments**. The phase-I is a part of **91 acres of township** with **7 towers** and **444 units** in the making. The project is a **Moroccan architecture** wonder that adorns features like **84% open space**, **podium landscaping**, **celebration square** and a **grand clubhouse of 44,513 square feet**. Among sports, Mahima Sansaar offers **ready-to-use cricket and football ground**, **tennis and basketball court** among **12 other well-equipped facilities**.



## Phase - I Area Table

COLOR	TYPE	S.B.U.A (SQ.FT.)	CARPET AREA (SQ.FT.)	B.U.A (SQ.FT.)
	2 BHK (OPTIMA 1)	800	524.20	625
	2 BHK (OPTIMA 2)	980	635.17	765.62
	3 BHK (ULTIMA 1)	1190	799.21	929.68
	3 BHK (ULTIMA 2)	1360	909.54	1062.25
	3 BHK (ULTIMA 3)	1580	1034.30	1234.37





## Rajasthan's 1st Sports Lifestyle Project



READY TO USE **CRICKET GROUND**



## Rajasthan's 1st Sports Lifestyle Project



READY TO USE **FOOTBALL GROUND**





## Rajasthan's 1st Sports Lifestyle Project



READY TO USE **BASKETBALL COURT**



## Rajasthan's 1st Sports Lifestyle Project



READY TO USE **TENNIS COURT**



## Rajasthan's 1st Sports Lifestyle Project



### OTHER SPORTS AMENITIES:

Badminton court

Squash court

Boxing ring

Cycling & jogging track

Table tennis

Indoor gym with cross fit activities

Outdoor gym

Rock climbing

Aerobics

Outdoor kids play area

Billiards/pool/snooker

*and many more...*



Club **Five Senses**



club  
**FIVE SENSES**  
*come alive*

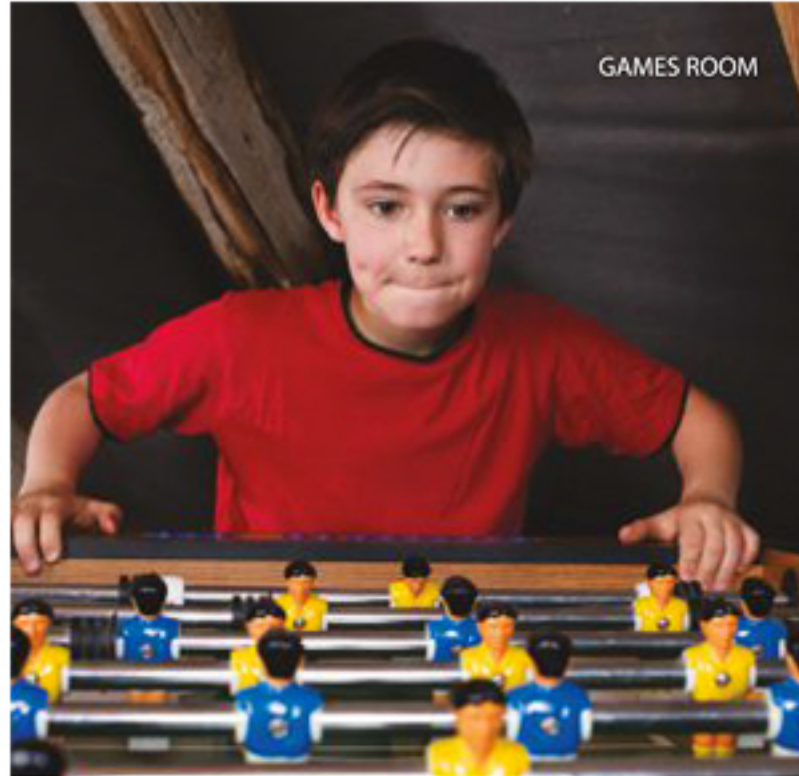


# Club Five Senses-Zones





# Club Five Senses-Kids Zone



GAMES ROOM



MUSIC / DANCE ROOM



INTERACTIVE ROOM



DRAMATIC AREA



SNOOZE ROOM



JUNGLE THEME KIDS' AREA

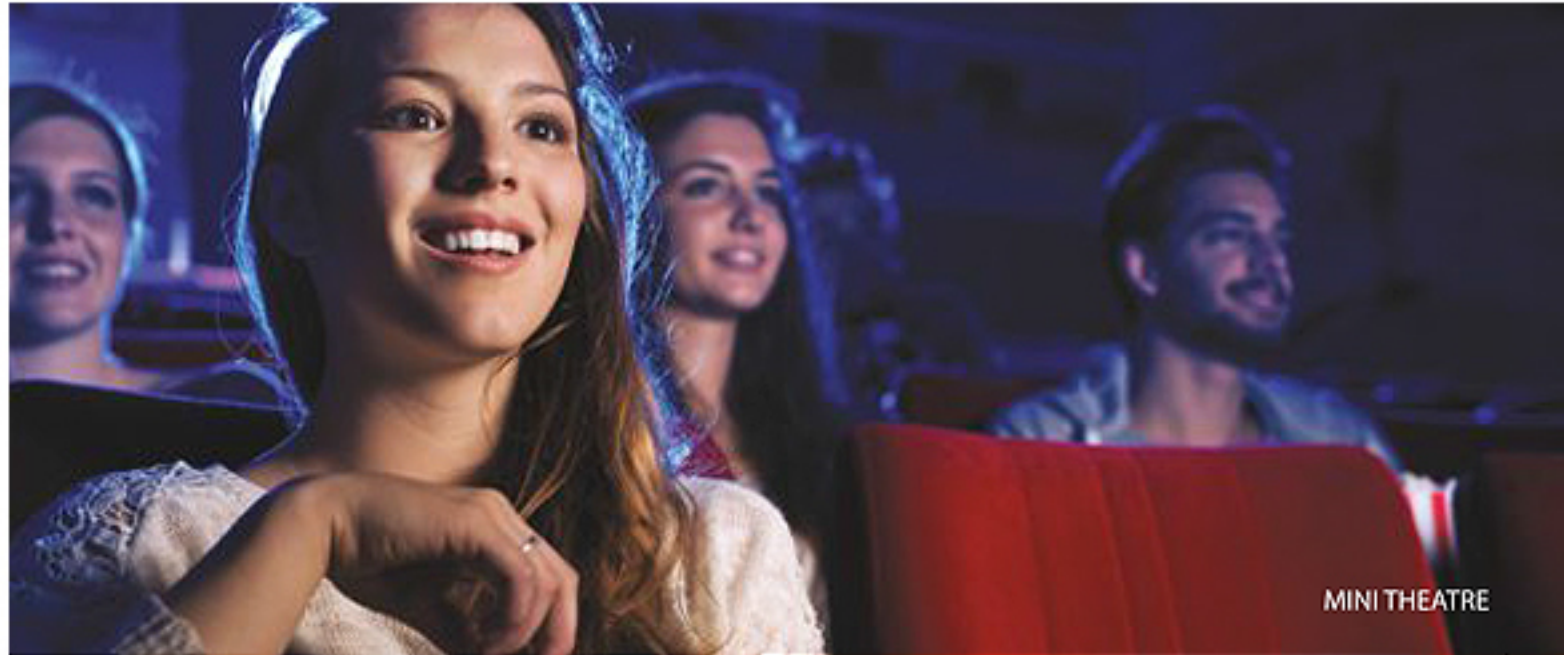


## Club Five Senses-**Reception Zone**





## Club Five Senses-**Celebration Zone**







## Club Five Senses-**Sports Zone**



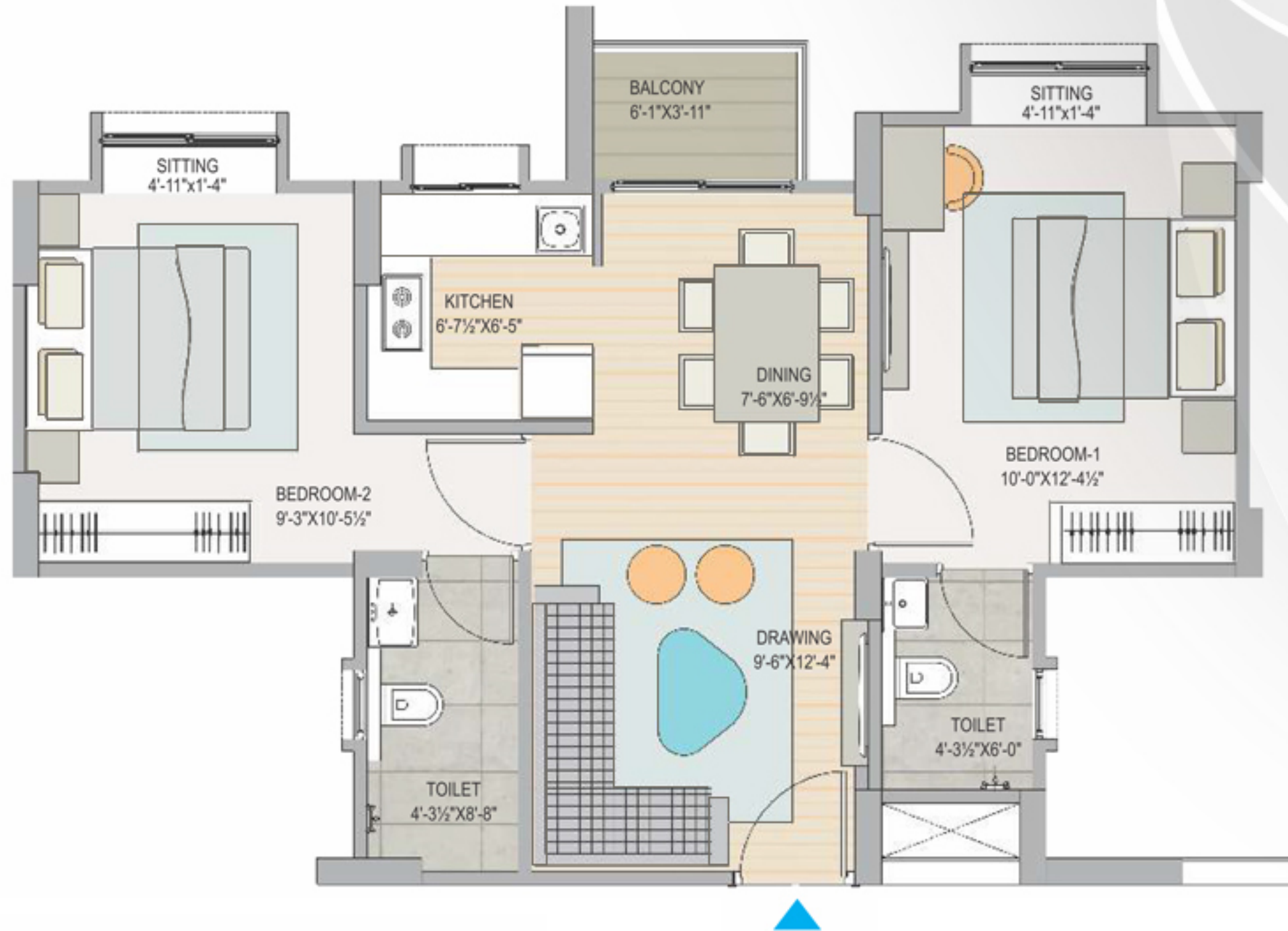


# Club Five Senses-Health Zone





## Unit Plans

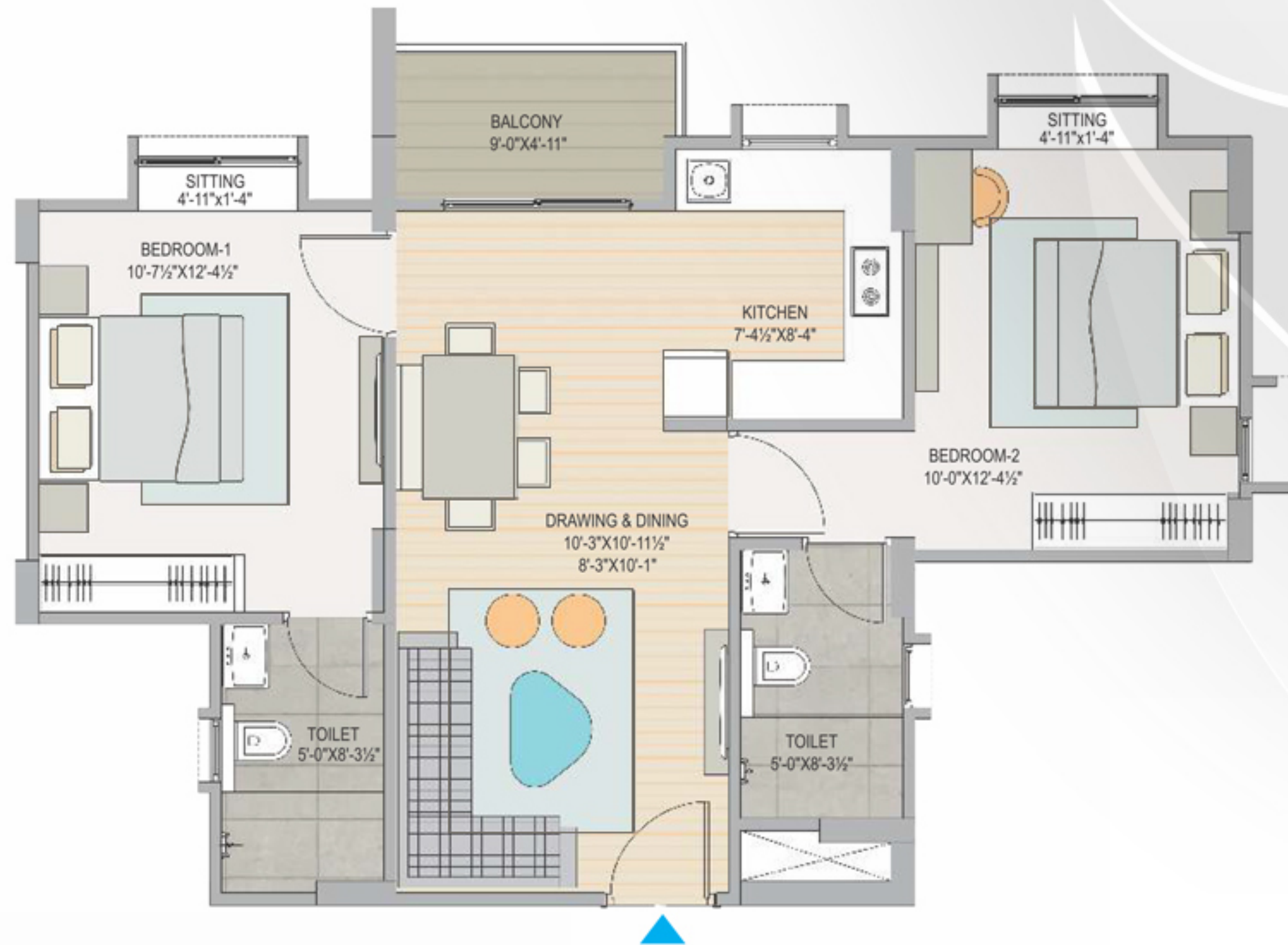


2 BHK (OPTIMA 1)

S.B.U.A: 800 Sq. Ft. | Carpet Area: 524.20 Sq. Ft. | B.U.A: 625 Sq. Ft.



## Unit Plans

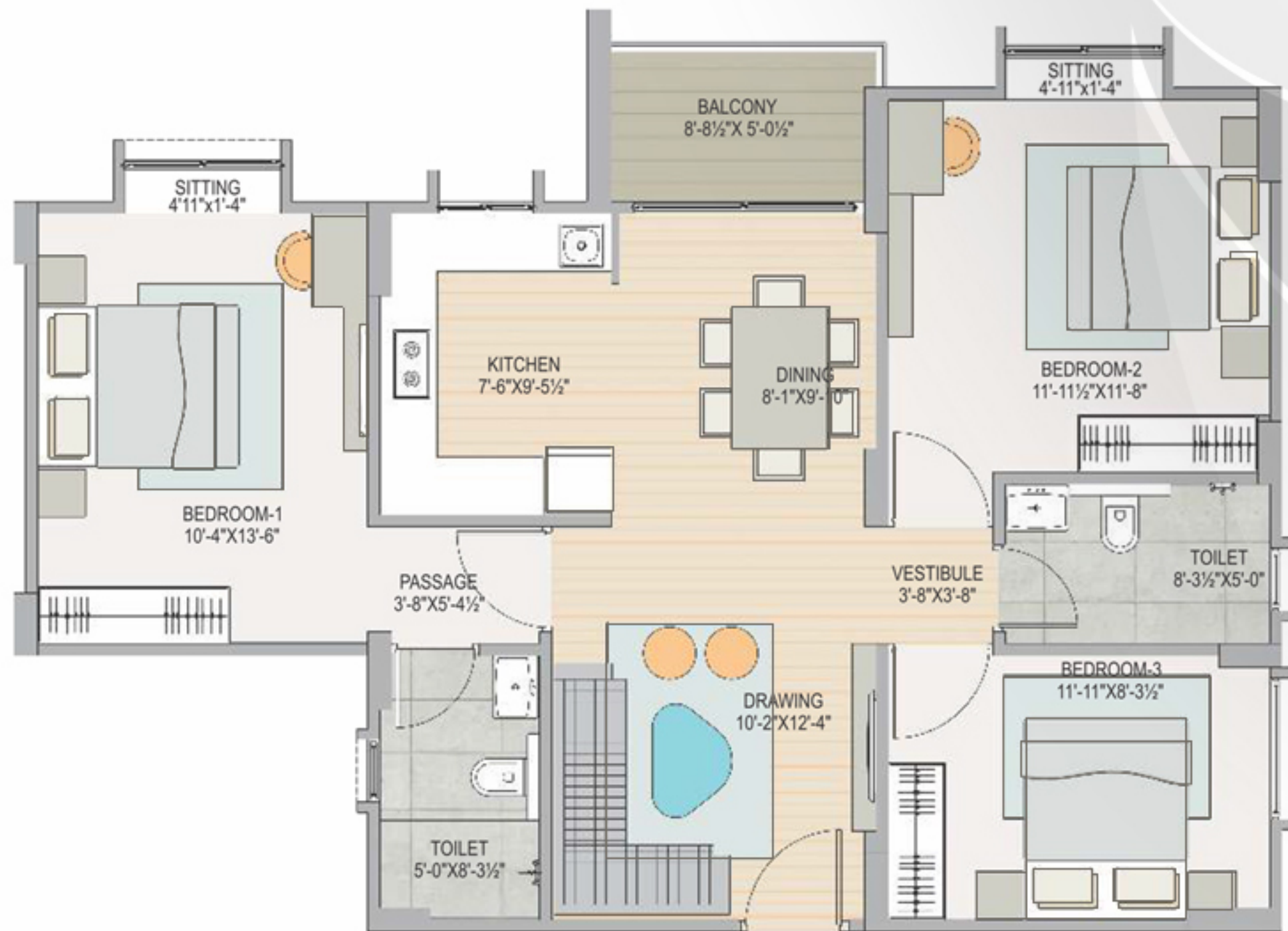


2 BHK (OPTIMA 2)

S.B.U.A: 980 Sq. Ft. | Carpet Area: 635.17 Sq. Ft. | B.U.A: 765.62 Sq. Ft.



## Unit Plans

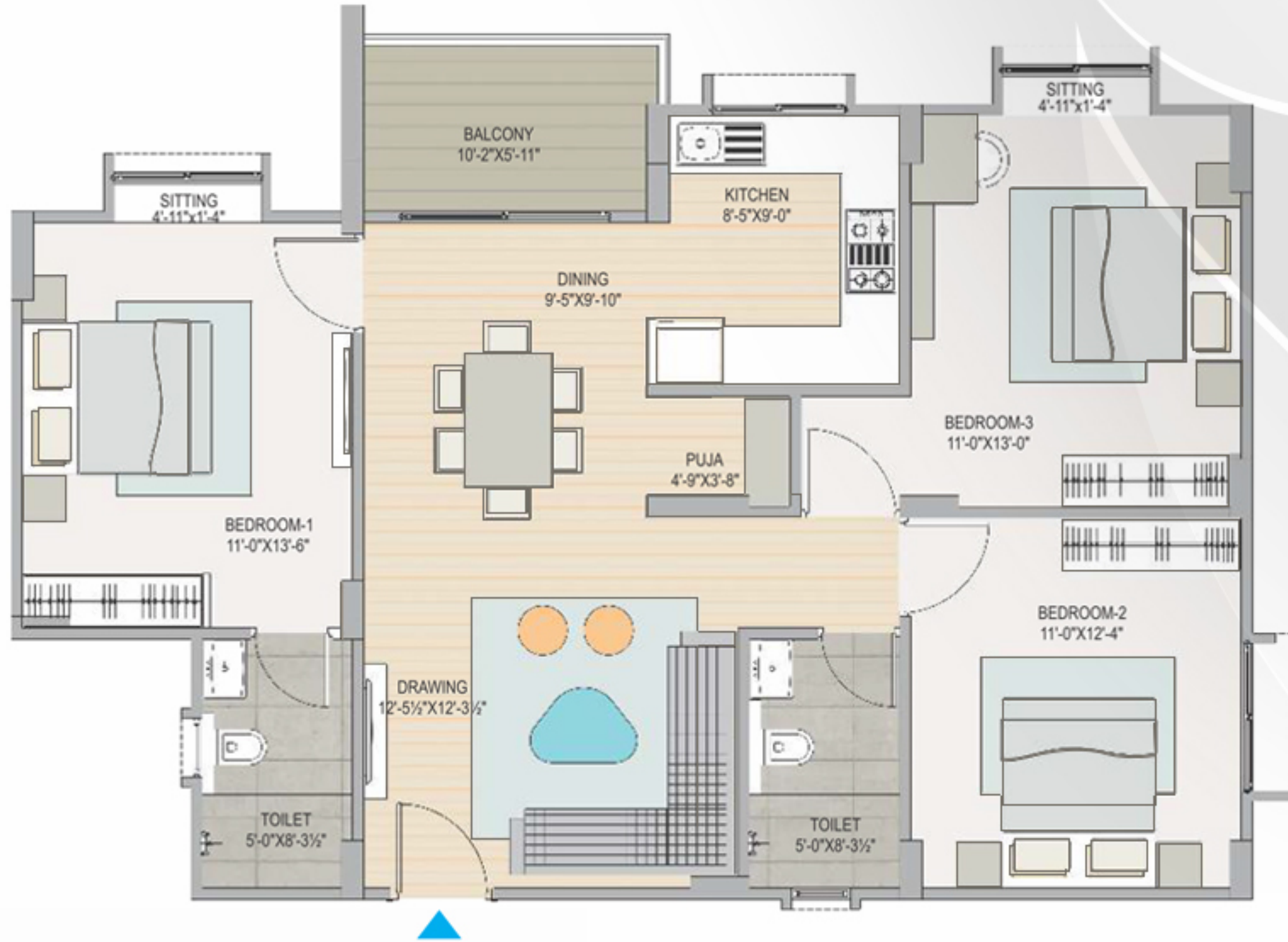


### 3 BHK (ULTIMA 1)

S.B.U.A: 1190 Sq. Ft. | Carpet Area: 799.21 Sq. Ft. | B.U.A: 929.68 Sq. Ft.



## Unit Plans

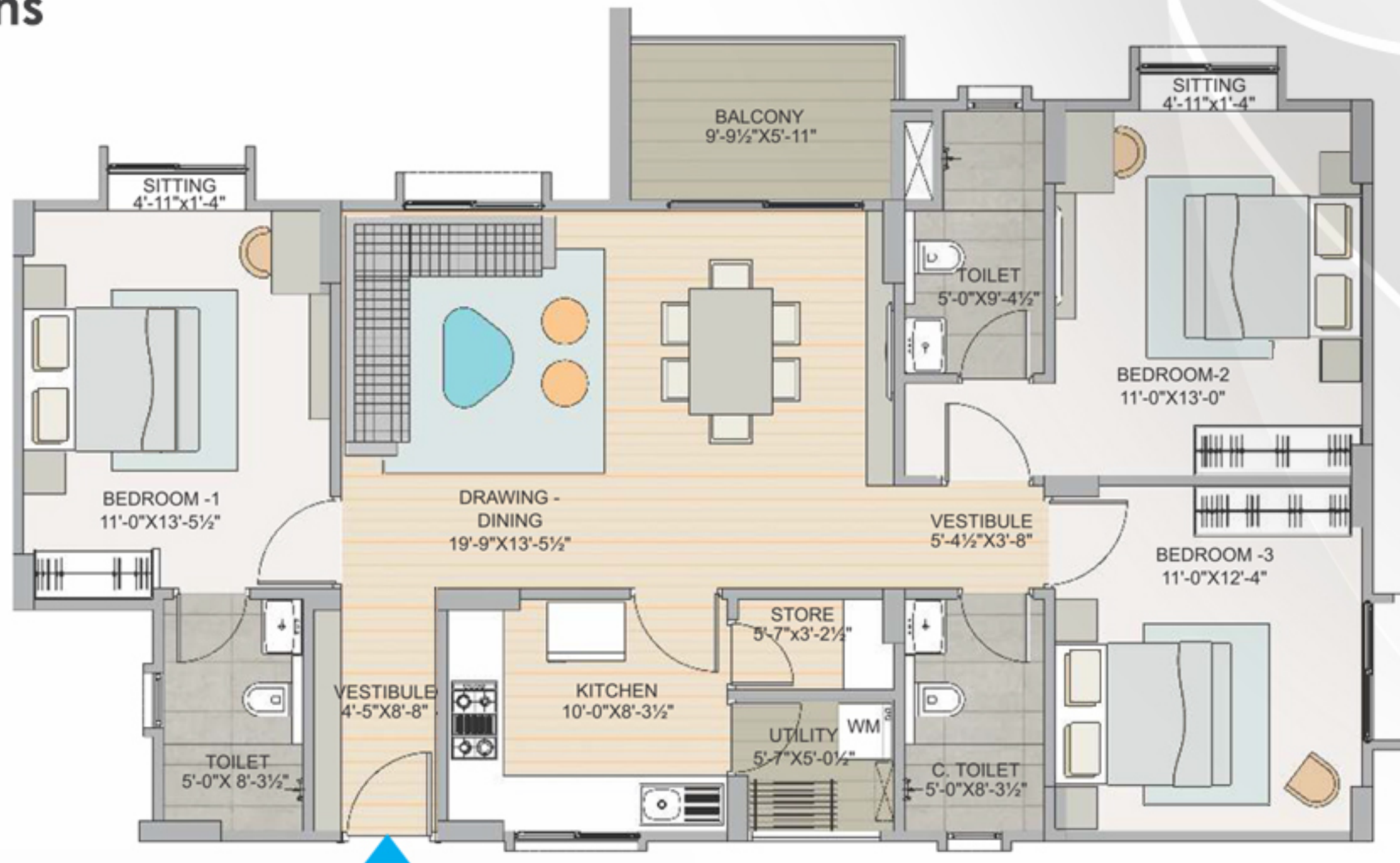


### 3 BHK (ULTIMA 2)

S.B.U.A: 1360 Sq. Ft. | Carpet Area: 909.54 Sq. Ft. | B.U.A: 1062.25 Sq. Ft.



## Unit Plans



3 BHK (ULTIMA 3)

S.B.U.A: 1580 Sq. Ft. | Carpet Area: 1034.34 Sq. Ft. | B.U.A: 1234.37 Sq. Ft.



## Actual Pictures of site







# Construction Update



# Thanks!

For more info, call:  **0141- 4050617**

**Mahima Real Estate Pvt. Ltd.** Corp. Office: 4th Floor, Crystal Palm, 22 Godam Circle,  
Sahkar Marg, Jaipur-302001, Rajasthan (INDIA) | **E: [marketing@mahimagroup.org](mailto:marketing@mahimagroup.org)** | **[www.mahimagroup.com](http://www.mahimagroup.com)**  
**CIN: U70101RJ1996PTC011675**